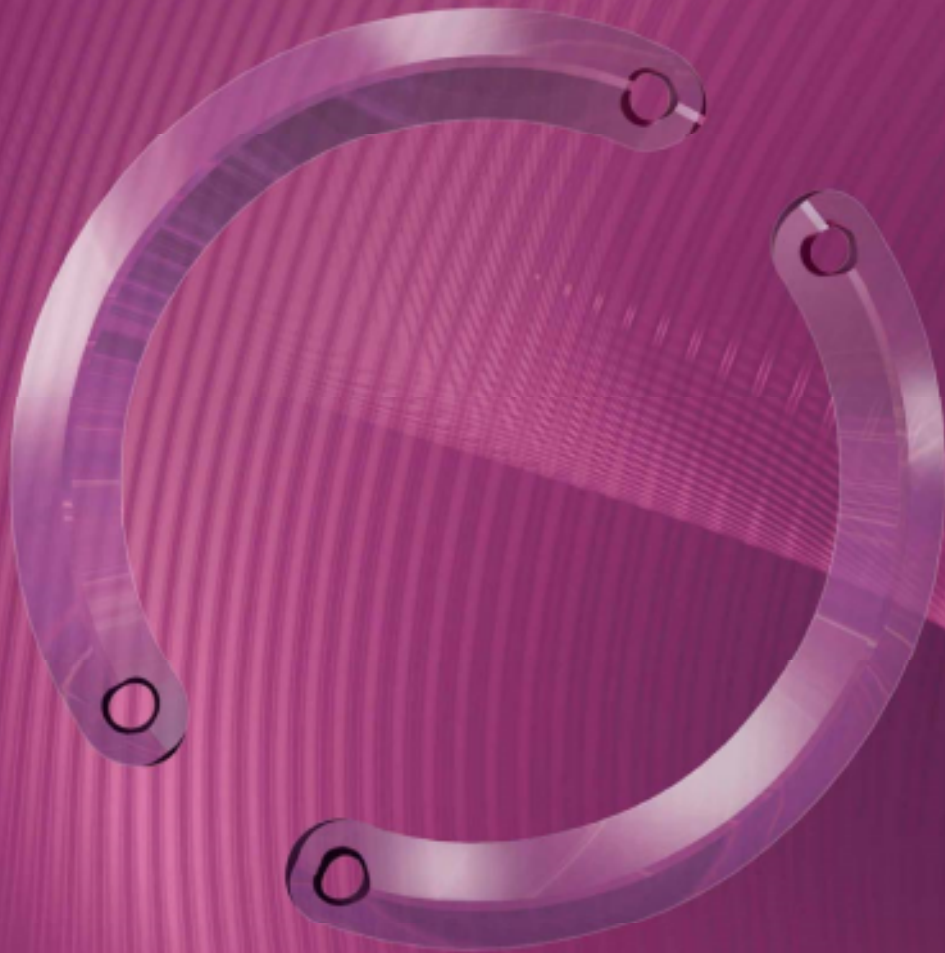


KERARING

INTRASTROMAL CORNEAL RING SEGMENTS

NEW VARIABLE OPTICAL ZONES

GLOBAL LEADER IN KERATOCONUS TREATMENT

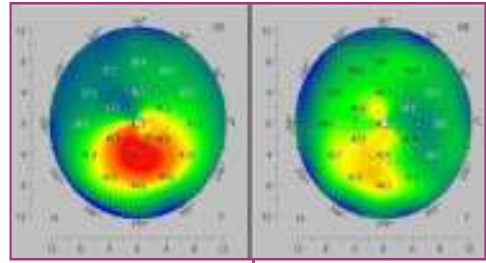


MEDIPHACOS
OPHTHALMIC PROFESSIONALS

VISION IN EVOLUTION

REVERSIBILITY

Keraring may be explanted at any time, allowing the cornea to revert to its original preoperative shape. The procedure is reversible.



ADJUSTABILITY

Refractive and topographic results may be easily readjusted by exchanging or repositioning the implant.



COMPATIBILITY WITH OTHER PROCEDURES

Keraring implants may be synergistically combined with other techniques such as corneal collagen crosslinking, PRK and phakic IOL implantation.

DOES NOT COMPROMISE CORNEAL TRANSPLANTATION

Keraring does not interfere with normal execution of lamellar or penetrating keratoplasty, if needed.

OUTSTANDING PATIENT SATISFACTION

Keraring patients report highly positive improvements in their quality of life.

QUICK VISUAL RECOVERY

Minimally invasive technique allows patients to rapidly resume their normal activities. Topographic and refractive changes are noticeable right after implantation and stabilize in 3 months on average.



1

2

3



INDICATIONS

- Keratoconus with poor BSCVA and contact lens intolerance.
- Progressing keratoconus.
- Pellucid marginal degeneration.
- Post Lasik ectasia.
- Irregular astigmatism following radial keratotomy.
- High astigmatism secondary to penetrating keratoplasty.
- Post-trauma corneal irregularities.



CONTRA-INDICATIONS

- Acute keratoconus with keratometry > 70 D.
- Major central corneal opacity.
- Hydrops.
- Following penetrating keratoplasty when graft is decentered.
- Severe atopic disease.
- Recurring corneal erosion syndrome.
- Patient's high expectations to achieve emmetropia.



MECHANISMS OF ACTION

- Corneal remodeling through addition technique: preserves corneal integrity.
- Corneal topography regularization and refractive correction preserving the natural prolate profile, reducing optical aberrations and improving visual acuity and contact lens tolerance.
- Displacement of corneal apex towards the central pupil.
- Corneal stabilization, delaying or eliminating the need for corneal transplantation.





Mediphacos is a world-class company with over 37 years of experience in ophthalmology and international presence in more than 48 countries in 5 continents.

Mediphacos has earned global presence and recognition through strong R&D investments, state-of-the-art manufacturing technology and sharp focus on the evolving needs of eye care professionals. In our modern manufacturing plant we employ exclusively the very best materials and technologies available worldwide, yielding innovative products of the highest quality, safety and efficacy.

All Mediphacos products are designed and manufactured under a comprehensive quality assurance system implemented in all areas of the enterprise and certified in conformity to ISO 9001-2000, ISO 13485, European Medical Devices Directive and GMP.




MEDIPHACOS
OPHTHALMIC PROFESSIONALS

VISION IN EVOLUTION



Mediphacos is a world-class company with over 37 years of experience in ophthalmology and international presence in more than 48 countries in 5 continents.

Mediphacos has earned global presence and recognition through strong R&D investments, state-of-the-art manufacturing technology and sharp focus on the evolving needs of eye care professionals. In our modern manufacturing plant we employ exclusively the very best materials and technologies available worldwide, yielding innovative products of the highest quality, safety and efficacy.

All Mediphacos products are designed and manufactured under a comprehensive quality assurance system implemented in all areas of the enterprise and certified in conformity to ISO 9001-2000, ISO 13485, European Medical Devices Directive and GMP.




MEDIPHACOS
OPHTHALMIC PROFESSIONALS

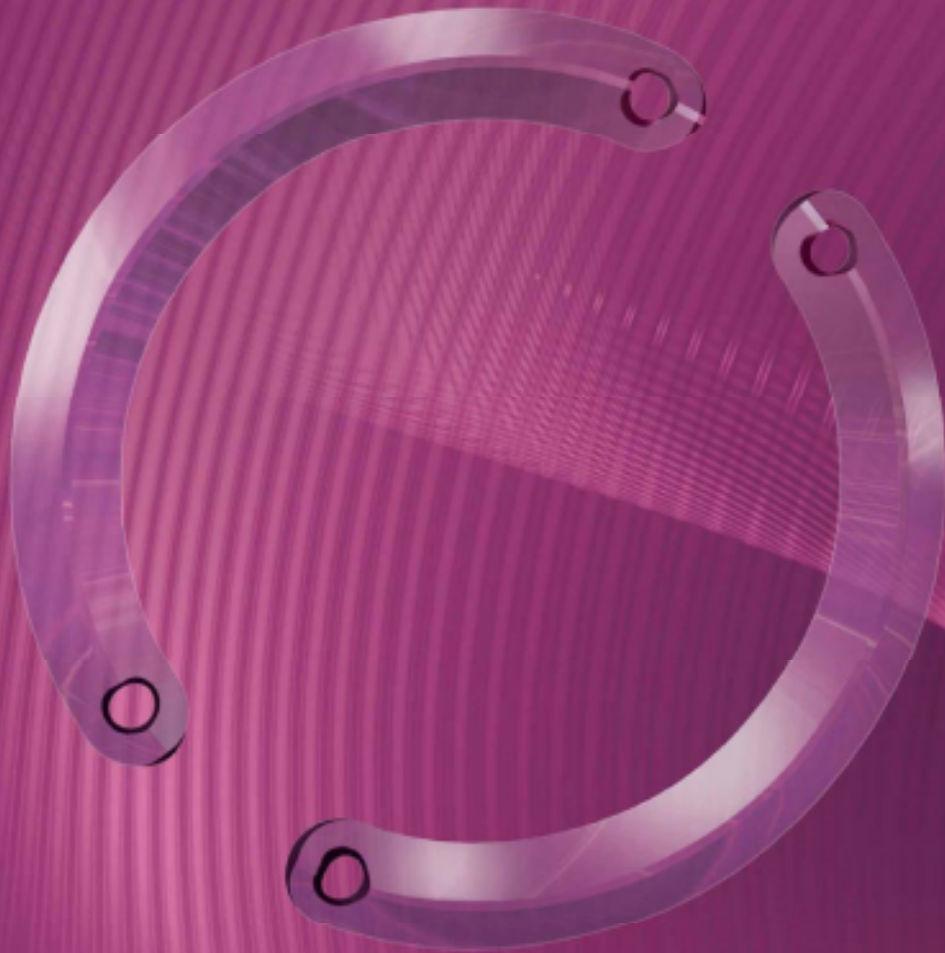
VISION IN EVOLUTION

KERARING

INTRASTROMAL CORNEAL RING SEGMENTS

NEW VARIABLE OPTICAL ZONES

GLOBAL LEADER IN KERATOCONUS TREATMENT



MEDIPHACOS
OPHTHALMIC PROFESSIONALS

VISION IN EVOLUTION